

# Fine Linen

Voice

A m G A m C

Fine lin en — bright and clean was gi - ven — her to wear The  
 Fine lin en — for the deeds, the right eous — deeds of saints The

6 A m G F G A m

wed ding — of the Lamb has come and the bride has made herself rea dy —  
 wed ding — of the Lamb has come and the bride has made herself rea dy —

11 F G A m

Ha lle lu - jah for the Lord God Al - migh - ty reigns — Ha-lle

16 F G A m F

lu - jah for the Lord God Al - migh - ty reigns — Let us re - joice and be glad —

21 G A m A m

— and give Him glor - y — Let us re Fine

# Your Name is Good

Am F C D Em

Voice

I am like an olive tree      Grow - ing in the house of the  
I will al - ways praise Your name      in the pre - sence of - Your

Am Am F C D

8

Lord In Your name I put my hope for - e - - - ver \_\_\_\_\_ and  
saints In Your name I put my hope for - e - - - ver \_\_\_\_\_ and

Em Am F G Am

17

e - ver \_\_\_\_\_ Your \_\_\_\_\_ name \_\_\_\_\_ is good \_\_\_\_\_  
e - ver \_\_\_\_\_ Dein \_\_\_\_\_ Name \_\_\_\_\_ ist gut \_\_\_\_\_

F D Am

27

\_\_\_\_\_ Your \_\_\_\_\_ name \_\_\_\_\_ is good \_\_\_\_\_  
\_\_\_\_\_ Dein \_\_\_\_\_ Name \_\_\_\_\_ ist gut \_\_\_\_\_

D Em F G F

37

— in Your \_\_\_\_\_ name \_\_\_\_\_ I will hope \_\_\_\_\_ for Your \_\_\_\_\_  
— Auf Dich \_\_\_\_\_ ho - - - fe ich \_\_\_\_\_ denn Dein \_\_\_\_\_

D Am

47

— name \_\_\_\_\_ is good \_\_\_\_\_  
— Name \_\_\_\_\_ ist gut \_\_\_\_\_

# Cover Me

Carolyn Hyde



Voice

Lord I cry \_\_\_\_\_ out to you \_\_\_\_\_

Lord I cry \_\_\_\_\_ out to



5

5 Cleanse/Heal me and make - me whole \_\_\_\_\_ I  
you \_\_\_\_\_

Cleanse/Heal me and make - me



9

9 lift up my eyes \_\_\_\_\_ to your throne \_\_\_\_\_

whole \_\_\_\_\_ I lift up my eyes - - to your



13

13 Lord God have mer - cy on \_\_\_\_\_ me \_\_\_\_\_

throne - - - - - Lord God have mer - cy on -

Cover Me

2  
17

A m D A m D A m

Wash a - way - my - sin Wash a - way - my -

me Wash a - way - my - sin

22

D A m D A m D

sin Cleanse/heal me with your blood

Wash a - way - my - sin Cleanse/heal me with - your

27

A m D A m D

Liv-ing wa-ter flow ing down Liv-ing wa-ter flow ing down

blood Li-ving wa-ter flow-ing down Li-ving wa-ter flow ing

31

F E7 A m D A m D

Co - ver me with your love

down Co - ver me with - your love

# HA ARETZ

Carolyn Margolin-Hyde

C F A m F

Im tesh - vu b' A - retz U - va - ni - ti et - chem

5 C F A m G

v' - lo - e - he - ros v - na - ta - ti - et chem

9 C F A m G

1. E - retz za - vat cha - lav - - - oo - dvas

13 C F A m G

E - - - retz a - sher E - lo - him - - - do - resh

17 C F A m G

2. E - retz a - sher tish - te mim - tar ha - sha - may - im

21 C F A m G

E - - - retz a - sher ay - nay E - lo - him ba

**CHORUS: If you will stay in this Land**

**Then I will build you up and not tear you down, I will plant you**

- 1. It's a Land that flows with milk and honey  
It's a Land that the L-rd cares for**
- 2. It's a Land that drinks the dew from heaven  
It's a Land that the eyes of the L-rd are always upon**

**From Jeremiah 42:10 and Deuteronomy 8**

# Hu Chai B'Tochi

Richard and Carolyn Hyde

D



C



G



D



E - lo - him hiv - te - ach l' shlo-ach et Ha Go - el \_\_\_\_\_  
 E - lo - him na - tan \_\_\_\_\_ li \_\_\_\_\_ hat - cha - la cha - dash a \_\_\_\_\_

A m7



E m7



C



G



5



— Hu sha - lach \_\_\_\_\_ o - to \_\_\_\_\_ Hu sha - lach \_\_\_\_\_ o - to \_\_\_\_\_  
 — Hu shich - rer \_\_\_\_\_ o - ti \_\_\_\_\_ Hu shich - rer \_\_\_\_\_ o - ti \_\_\_\_\_

D



C



G



D



9



E - lo - him has pro - mised to send to us the Re - deemer \_\_\_\_\_  
 E - lo - him has gi - ven a new be - ginn - ing to me \_\_\_\_\_

A m7



E m7



C



G



13



\_\_\_\_\_ He sent \_\_\_\_\_ Him \_\_\_\_\_ He sent \_\_\_\_\_ Him \_\_\_\_\_  
 — He re - leased \_\_\_\_\_ me \_\_\_\_\_ He re - leased \_\_\_\_\_ me \_\_\_\_\_

D



C



G



D



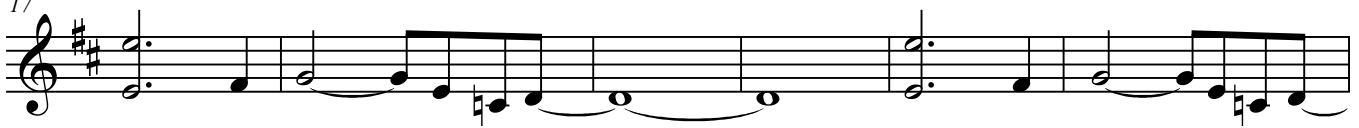
D



C

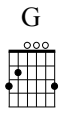


17



— He lives \_\_\_\_\_ with - in me \_\_\_\_\_ Hu chai \_\_\_\_\_ b' - to - chi \_\_\_\_\_

2



D  
Hu Chai B' Fochi

A guitar chord diagram for the D major chord. It shows a six-string guitar with the following fret positions: 2nd fret on the 2nd string, 2nd fret on the 3rd string, 2nd fret on the 4th string, 2nd fret on the 5th string, and 2nd fret on the 6th string. The 1st string is open.

23

A musical staff in treble clef with a key signature of two sharps (F# and C#). The staff contains two whole notes connected by a slur. The first note is on the second line (D4) and the second note is on the second space (F#4). Below the staff are two empty horizontal lines.